

WASC1054  
WAI 245

*Handwritten notes:*  
H. M. ...  
...  
H. M. ...

NG Buildings

WASC 1054



Jan. 1981

WASC 1054





N.H.  
G  
Sp

WASC  
1054 / 1

S27-New Hill  
Magazine  
Jan 81

wai-0245-01-wasc-1054-01







New Hill from.  
atop 827

WASC 1054/2

NH

Sp

Wain 024502 WASC 1054-02







G

NH

SP

WASC 1054/3

S27  
looking East

wai-0245-03\_wasc-1054-03

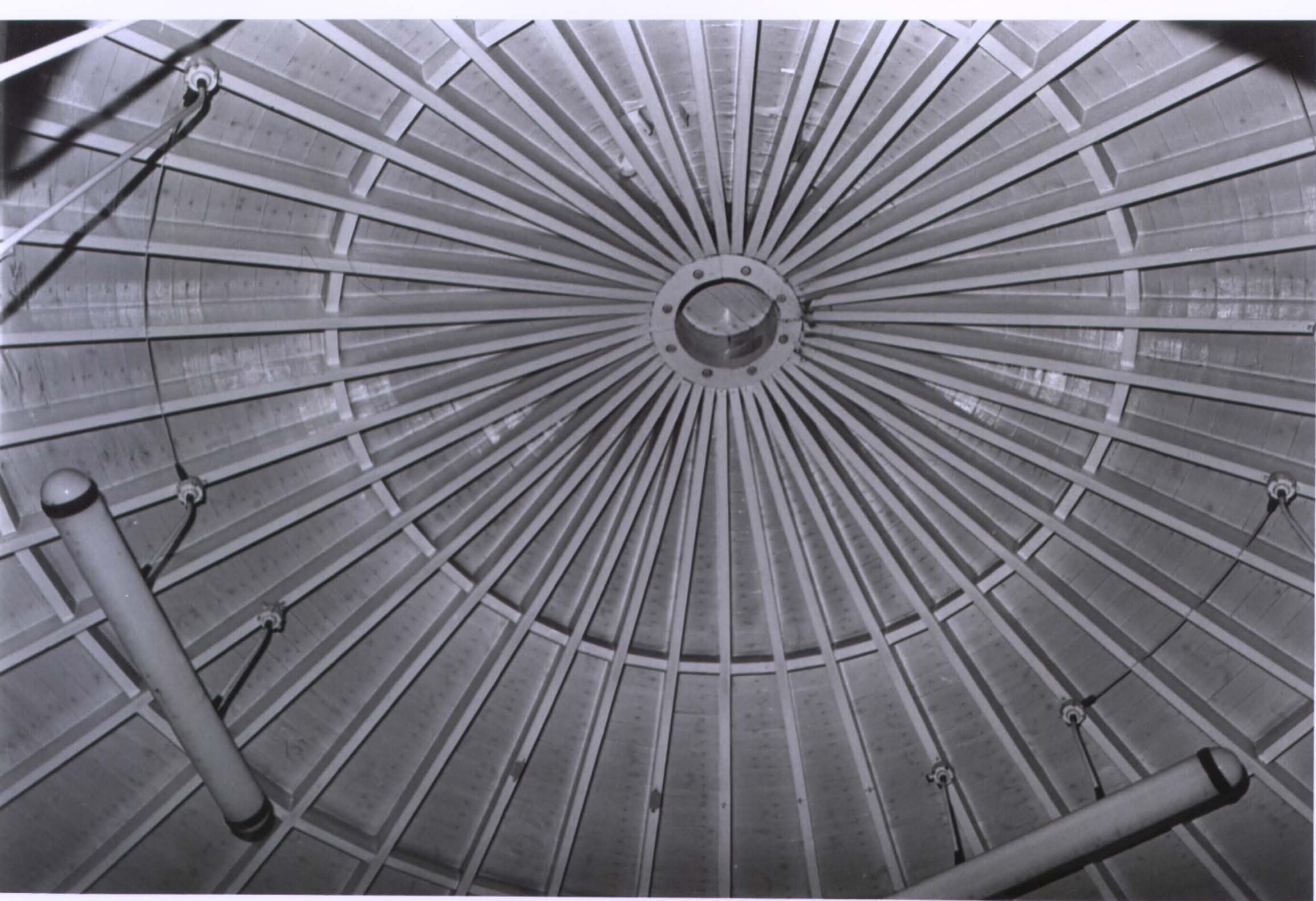




Back of S27  
looking West.

WASC 1054/4

wai-0254-04- wasc-1054-04





NG

G

Sp

Rog interior  
E 3.

WASC  
105415





NG  
G  
JP

WASC  
1054/6

E3

wa1-0245-06-wasc-1054-06





WASC  
105417

WAI-0245-07-WASC-1054-07





NG  
G  
Sp

WASC  
1054/8

Broken steps  
interior ES.

WASC 1054-08

E5

1896





WASC 1054/9





WASC 1054/10

WASC 1054/10





WASC 1054/11

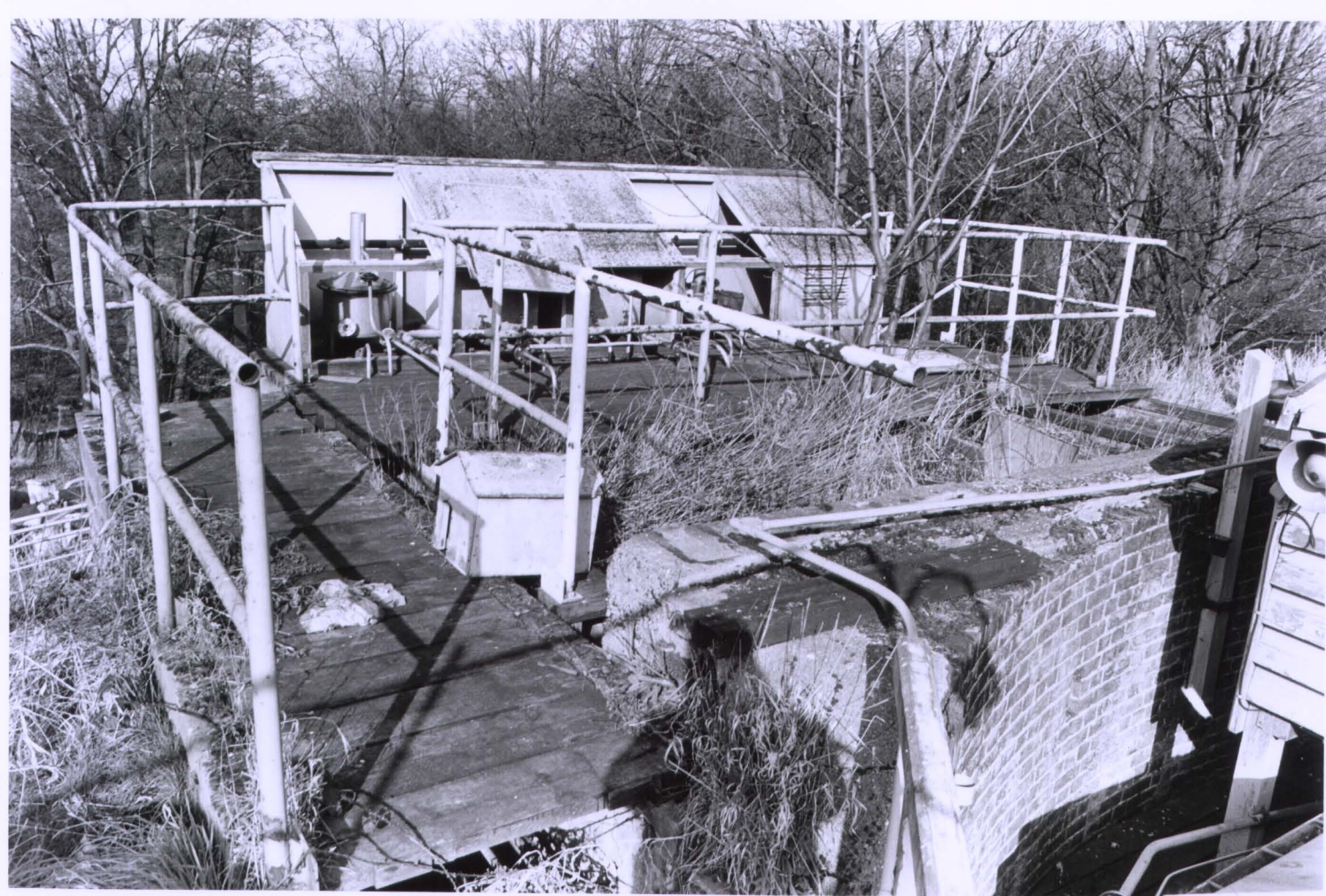
NG

→  
→

E 2

Looking North  
West

wa-0243-11-WAC-1054-11



WASC 1054/12

Atop E 2

NG

G

Sp

wai-0245-12-wasc-1054-12





WASC 1054/13

NIG

SP

Atop E 2

Wai - 0245-13 - WASC - 1054-13





WASC 1054/14

Stop E2

NG

→

Sp

wai-0245-14-wasc-1054-14



WASC 1054/15

E 2.

NE

Sp

WAI-0245-15-WASC-1054-15





WASC 1054/16

~~WAG~~

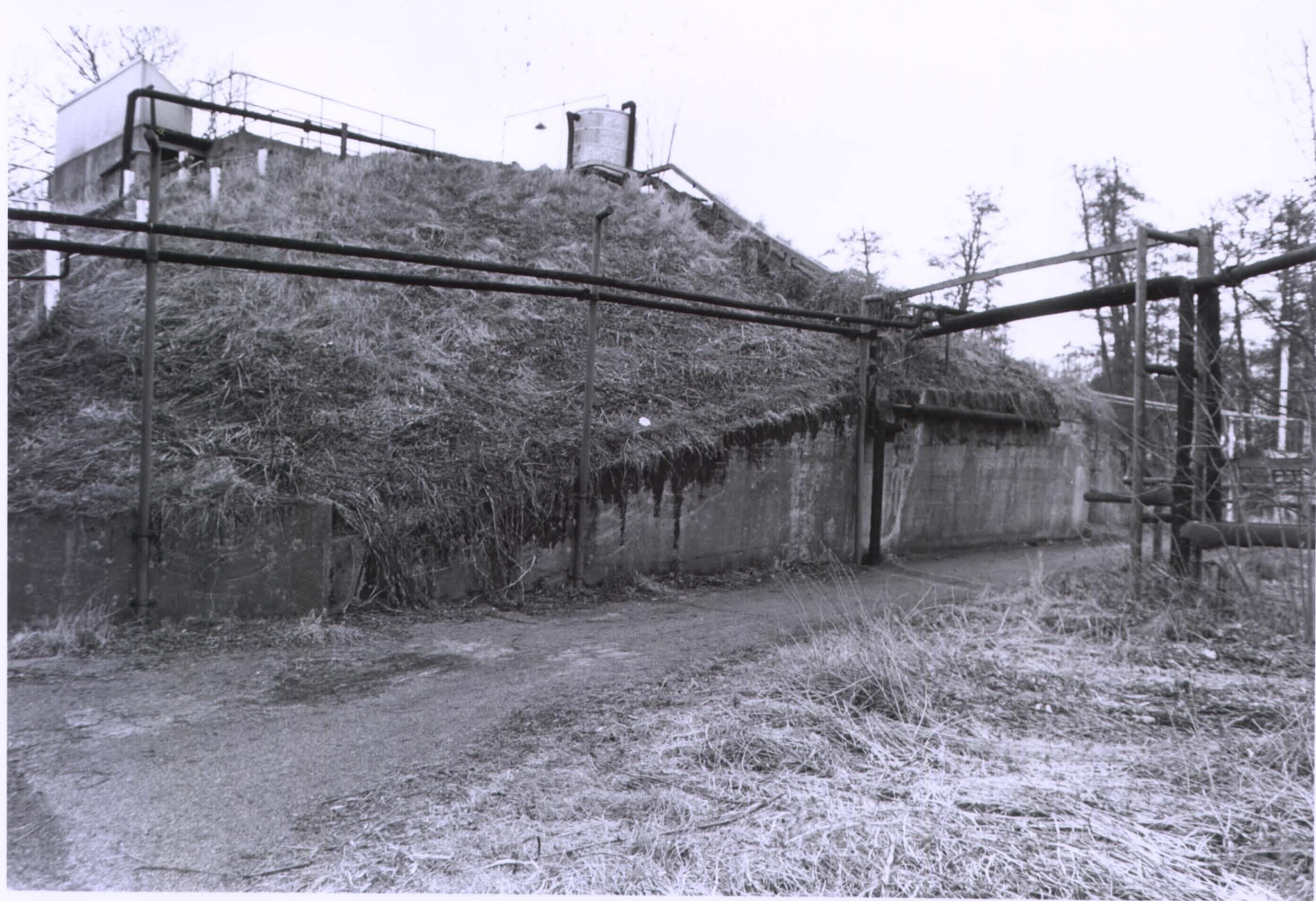
Mystr

G

SP

E 1  
Bassel +  
Weighing House.

waic-245-16(y-wasc-1054-16(1))





WASC 1054/17

NG

Sp

E2.  
+ approach to  
E3 + E5

was - 0245-07 - wasc-1054-17



WASC 1054/18

Entrance to  
E5

wai-0245-18-wasc-1054-18





WASC 1054/19

Entrance/Exit  
tunnel E5

WASC 1054-19







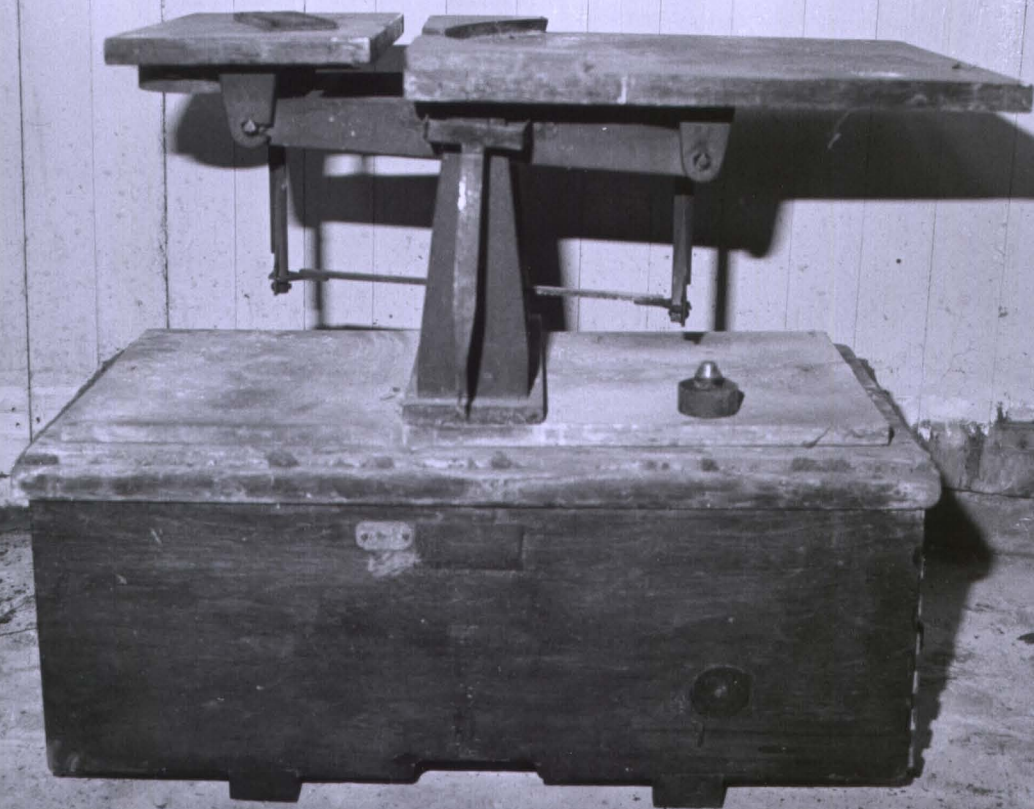
N/G

Sp

WASC 1054/20

E5

Wai-0245-20-WASC-1054-20



Old Scales  
found in E 5

WASC 1054/21