

WASC 0749

WAI 0639



DR W H WHEELER
DIRECTOR ERDF

JUNE 1959 - NOV 1959

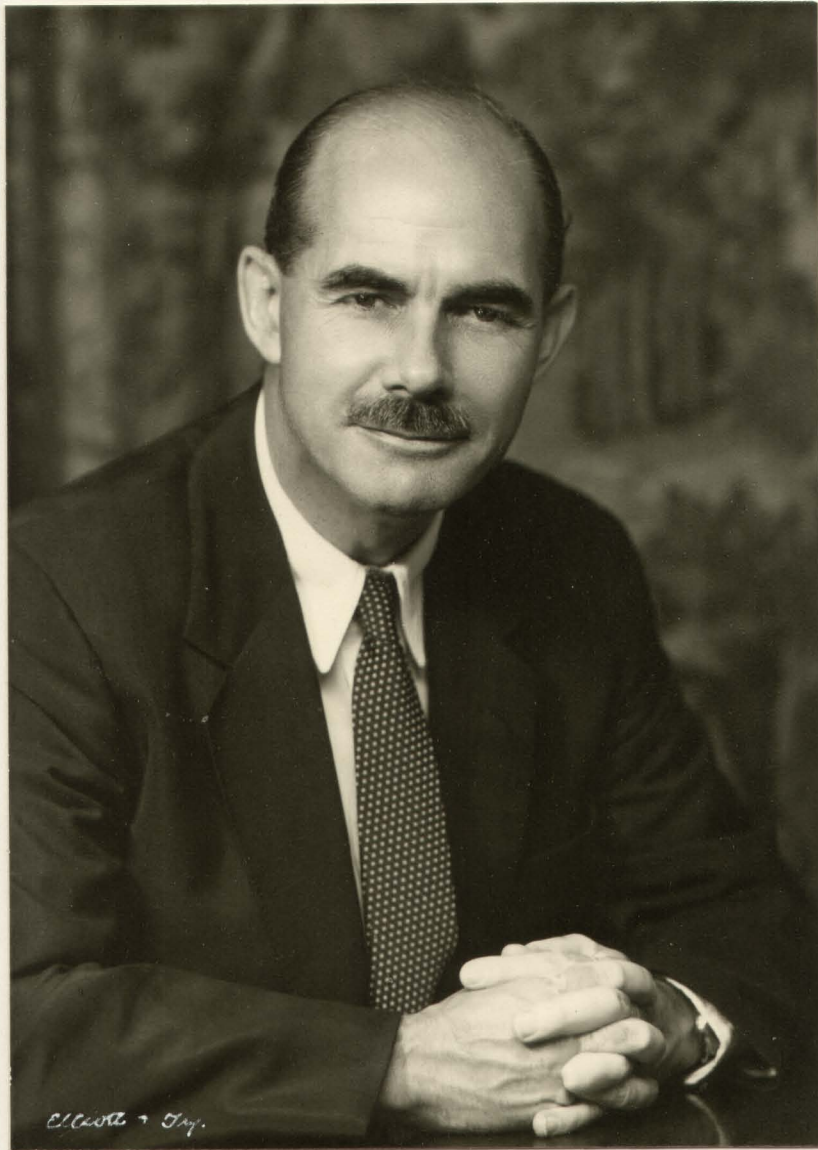
Portraits of the Superintendents

In 1787 the Gunpowder mills were taken over by the Crown under the direction of Major William Congreve, then deputy controller of the Royal Laboratory at Woolwich.

For many years, the Waltham Abbey works was known as the Royal Gunpowder Factory. After the Second World War, the site became a research establishment with a number of different titles.

These photographs record the directors and superintendents of the site spanning an uninterrupted period from 1845 until the site closed in 1991.

These venerable gentlemen effectively shaped the course of our history.



Dr W H Wheeler, CMG
Director ERDE
June 1959 - November 1959