

On Her Majesty's Service

WASC 325  
WAI 80

25/1-20.

325

Photos of Steam  
Lines



Wasc 0325  
Wai 0080  
FC

1946

Series of b/w photographs apparently showing course of Steam Mains north from boiler house. 1 - 20

	1	Millhead looking north with powder boat right foreground
	2	Long walk looking north
	3	Steam line through trees. Path on rhs
	4	Steam line crossing waterway
	5	Similar to /4 but with logs in foreground
	6	Crossover point similar to /4
	7	Small footbridge. Magazine visible
	8	Long walk - buildings visible
Walk	9	Blast wall for 159 on lhs, looking north along Long
	10	No 3 Boiler House 86 and 86b
right	11	Blast wall in distance, view along waterway with line on
	12	Steam line across picture
	13	Blast wall for 159 (see /9)
	14	Long walk (?) RCHME 299 looking south
	15	A210 Power House N aspect, footbridge L180?
	16	As /15
boats, footbridge, sandbags	17	A210 Power House N & W sides, A214 Accumulator Tower,
footbridge, boats	18	A210 Power House and A214 Accumulator Tower, N sides,
	19	BR 16 in background. L102 looking NE
	20	Canal with steam line on lhs







325/3.



325/4.





325/5.





















325/12 .

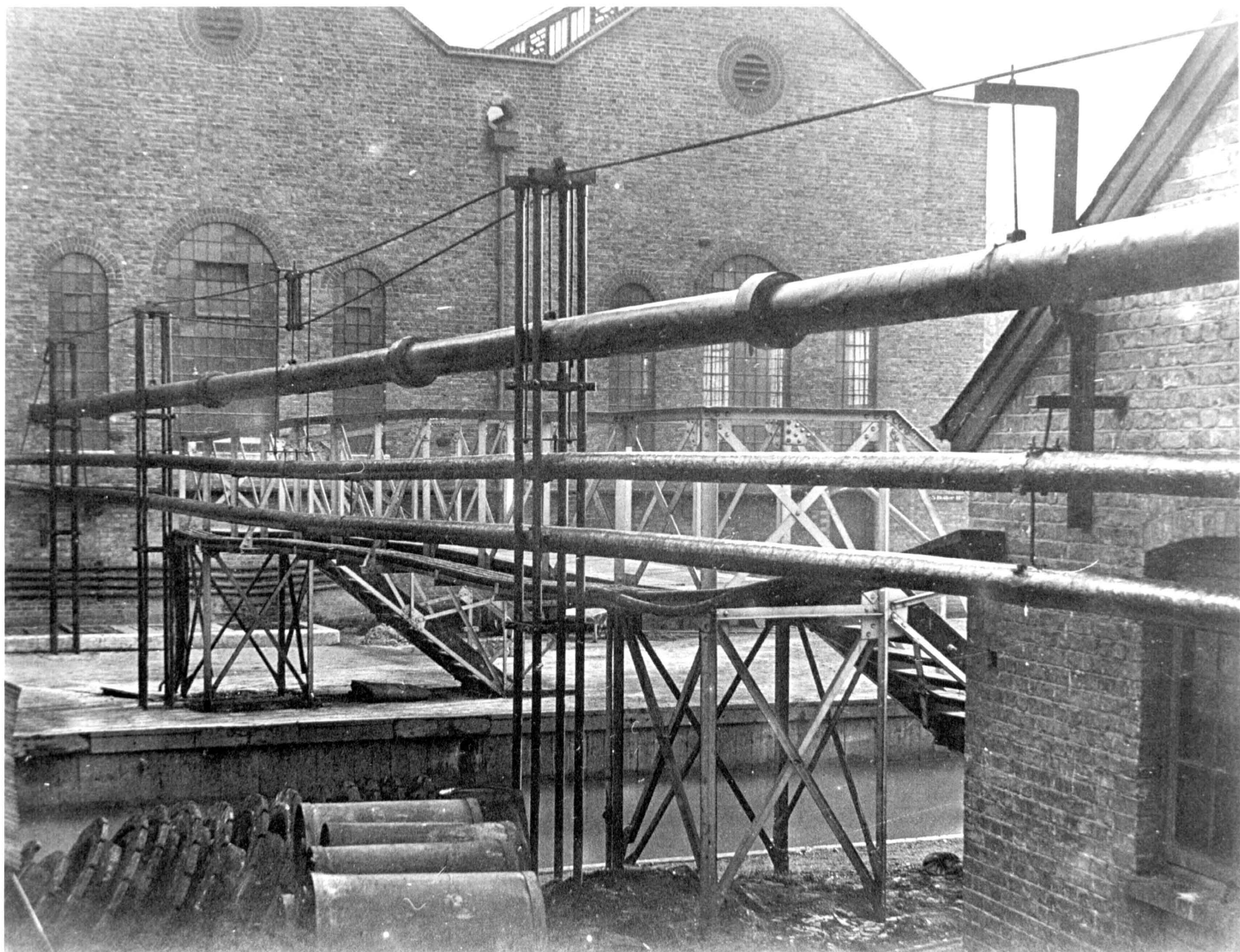






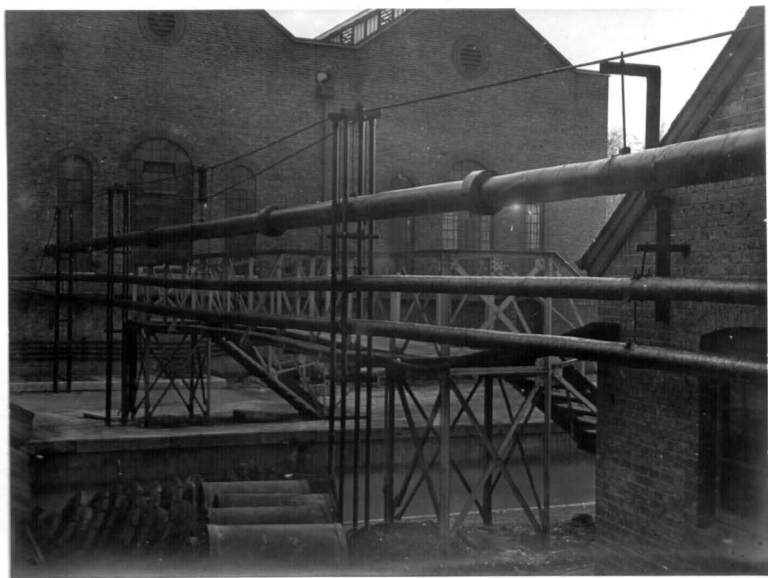




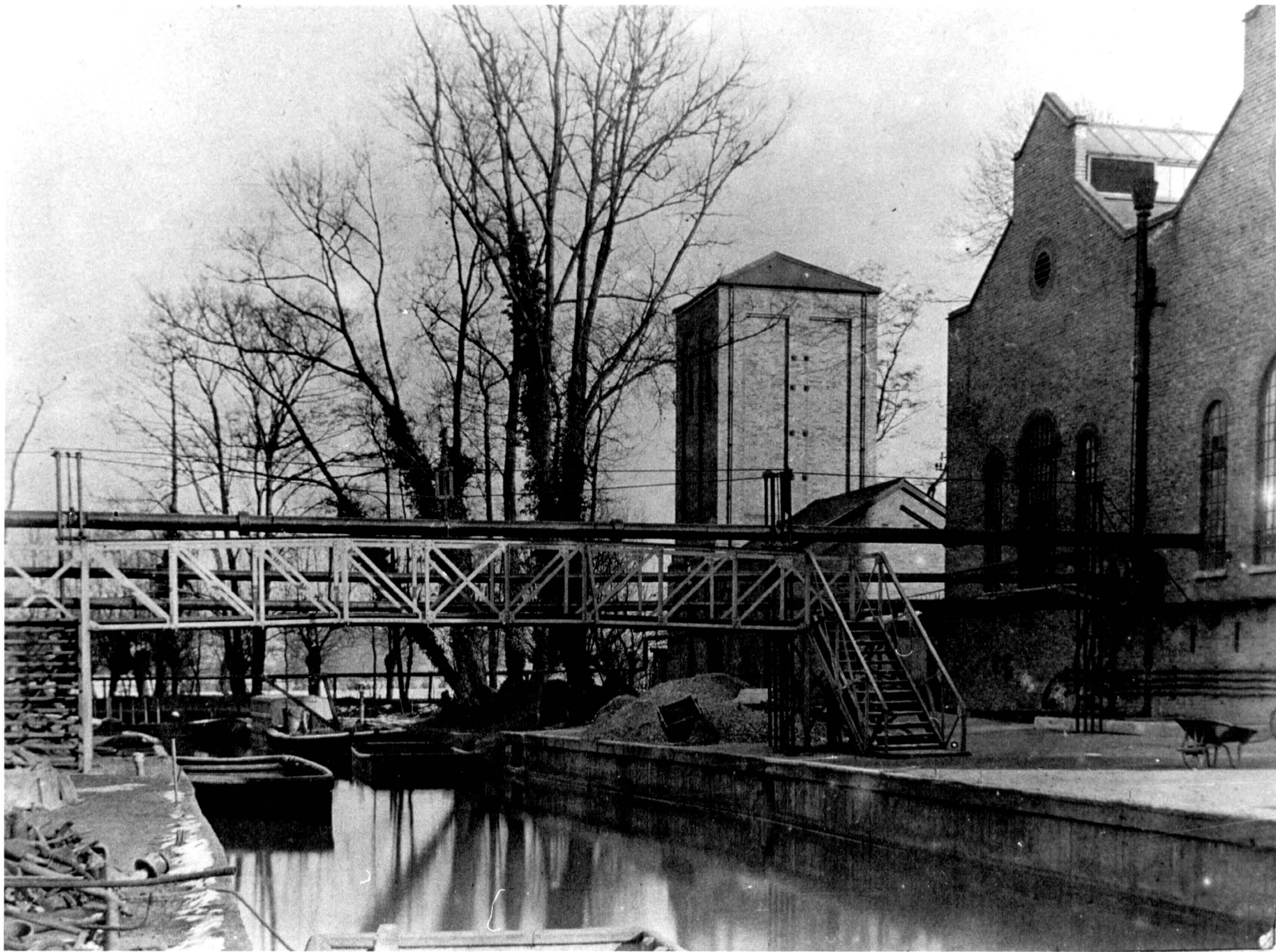




325/16











325/20 •

