

WASC 129

WBI 53

HW 40

COLONEL SIR FREDERICK  
NATHAN KNT  
SUPERINTENDENT  
RCPF 1900-1909

# Portraits of the Superintendents

In 1787 the Gunpowder mills were taken over by the Crown under the direction of Major William Congreve, then deputy controller of the Royal Laboratory at Woolwich.

For many years, the Waltham Abbey works was known as the Royal Gunpowder Factory. After the Second World War, the site became a research establishment with a number of different titles.

These photographs record the directors and superintendents of the site spanning an uninterrupted period from 1845 until the site closed in 1991.

These venerable gentlemen effectively shaped the course of our history.



*Elliott & Fry*

COLONEL SIR FREDERIC NATHAN, KNT.,  
SUPERINTENDENT R.C.P.F.  
— 1900-1909. —



*Elliott & Fry*

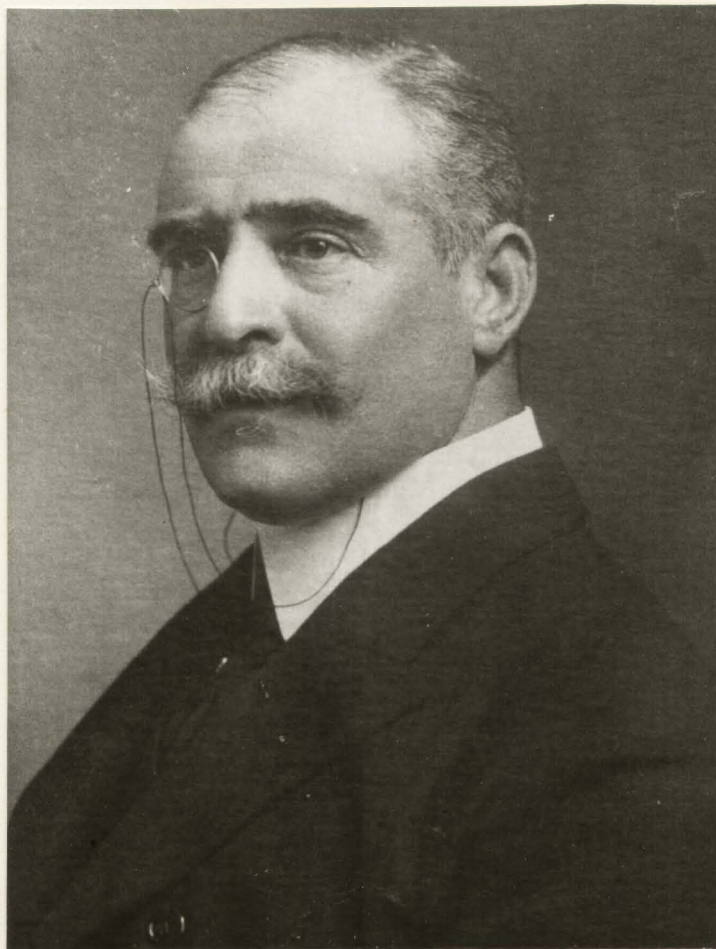
COLONEL SIR FREDERIC NATHAN, KNT.

SUPERINTENDENT R.C.P.F.

— 1900-1909. —

SUPERINTENDENT R.C. & S.A.F.

— 1909. —



Colonel Sir Frederic L Nathan, Knt  
Superintendent R G P F 1900-1909